



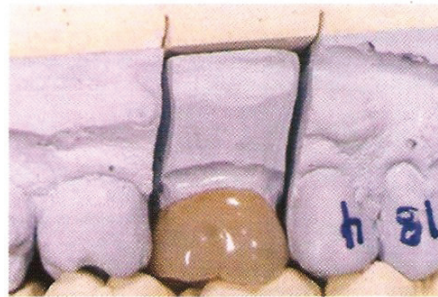
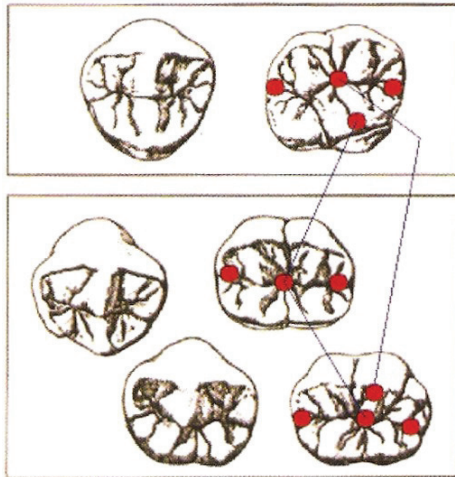
SOUTHERNCRAFT™

DENTAL LABORATORY, CDL

Precision Crafted. Technology Driven.

Occlusal Contact Definitions

Contact	Tape Pull Ragle Standard Procedure	VO1 Visibly Out x1	VO2 Visibly Out x2	VO3 Visibly Out x3
Leave specific contact points on occlusal surface as show below.	Articulating tape should pull through when models are in centric relation.	Out .1 should appear to be visible but not excessive. Die from base is up .1mm	Out .2 should appear as if there is a slight to moderate gap at base. (Implants)	Out .3 should appear excessive.
VO4 Visibly Out x4	VO5 Visibly Out x5			
Out .4 should appear excessive.	Out .5 should appear extremely excessive.			



The space when the die is popped up from the base is the VO Gap.